

WELLINGTON RISE

Lot 519 Sackville Street, Mernda



Facade shown for illustration purposes

FIXED PRICE
House and Land Package

\$549,263



House Plan: Clover

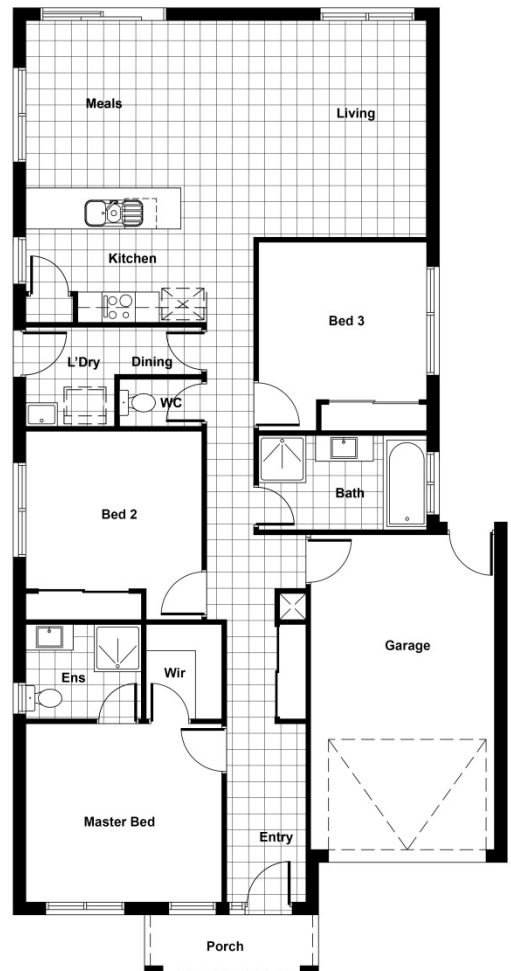
House Size: 150.04m² (16.15sq)

Land Size: 302m²

PREMIUM SPECIFICATION

FIXED PRICE INCLUSIONS

- Building Contract within 5 working days
- Site Costs (No Hidden Extras)
- 2550mm Ceiling Height throughout
- Stainless Steel Kitchen Appliances
- Stone Kitchen and Bathroom Benchtops
- Subway Tile Kitchen Splashback
- Evaporative Cooling & Ducted gas heating
- Window Furnishings
- LED Down Lights throughout
- Quality floor coverings
- Designer Fixtures & Fittings
- Security System
- Front & Rear Landscaping
- Fencing
- Exposed Aggregate Driveway
- and much, much more



1300 367 590



Floor plans, elevations and images are for illustration purposes only and may depict upgrade options available at additional costs (including but not limited to, landscaping, internal and external finishes, fencing, decking, render and driveways). All packages are based on Davrose Homes preferred siting and subject to Developer and Council Approval. Davrose Homes reserves the right to withdraw or amend plans and pricing without notice. First Home Buyers subject to SRO eligibility criteria for First Home Owner Grant. Overall dimensions do not include eaves and may vary depending on facade style. This brochure does not constitute any offer or form part of any Contract. All designs are the property of Davrose Investment Holdings and must not be used, reproduced, copied or varied, wholly or in part without written permission from Davrose Investment Holdings. © 2017 Davrose Investment Holdings.