



a family building  
homes for families™



# HOUSE & LAND

# \$496,109\*

## WELLINGTON RISE - MERNDA

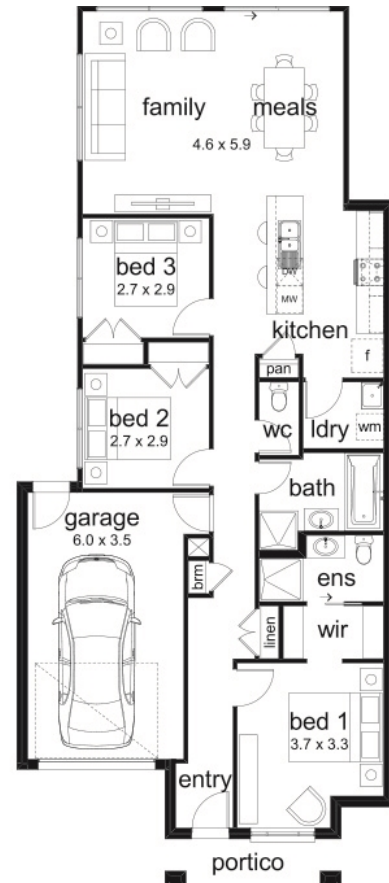
Lot 519 Sackville St  
Mernda VIC 3754



### Ardina 15 Melba Facade (Aspirations)

Home size: 14.85sq Land size: 302m<sup>2</sup>

- ✓ Aspirations Inclusions
- ✓ Site Costs Allowance
- ✓ Developer/Estate Covenant Requirements
- ✓ NBN Connection
- ✓ Sectional Garage Door
- ✓ Remote control to garage door
- ✓ Stainless Steel Appliances
- ✓ Ducted Heating
- ✓ Floor Coverings
- ✓ 35 m2 of Concrete Drive and Paving
- ✓ Current Promotion



**WELLINGTON RISE**  
*the start of something new*

Go to [dennisfamily.com.au](http://dennisfamily.com.au) or call  
**1800 DENNIS** for more information.

Lisa Simon - 0448 650 712 & Kannan  
Surendran - 0428 033 876  
Reference HL0026207

1. Illustrations, photographs and images of homes constructed by Dennis Family Homes: a. may include options and upgrades that are available at an additional cost; b. may include items such as landscaping and gardens, driveway, paving, decking and fencing not supplied by Dennis Family Homes, unless otherwise stated. 2. Price based on the facade type as illustrated. 3. All house and land packages are only available for the specified lot and home advertised and is only available until sold. 4. Final designs, inclusions, and options included in package may change from the information provided and may be varied by Dennis Family Homes without notice. 5. Prices published: a. are correct at the time of publishing but may change without notice after the date of printing; b. do not include stamp duty, legal fees or any other costs incurred in connection with the purchase. 6. Specific Developer of the Estate requirements are excluded unless otherwise stated. Additional costs may be incurred based on BAL zoning assessment. 9. Package offering not available in conjunction with any other offer. 10. House and land packages are subject to land availability which may change at any time without notice. Visit [dennisfamily.com.au](http://dennisfamily.com.au) for full terms and conditions. For specific details/allowances relating to items included within this house and land package or our home your land offer, please refer to a Dennis Family Homes Sales Consultant. Dennis Family Homes Pty Ltd (ABN 83 056 254 249).